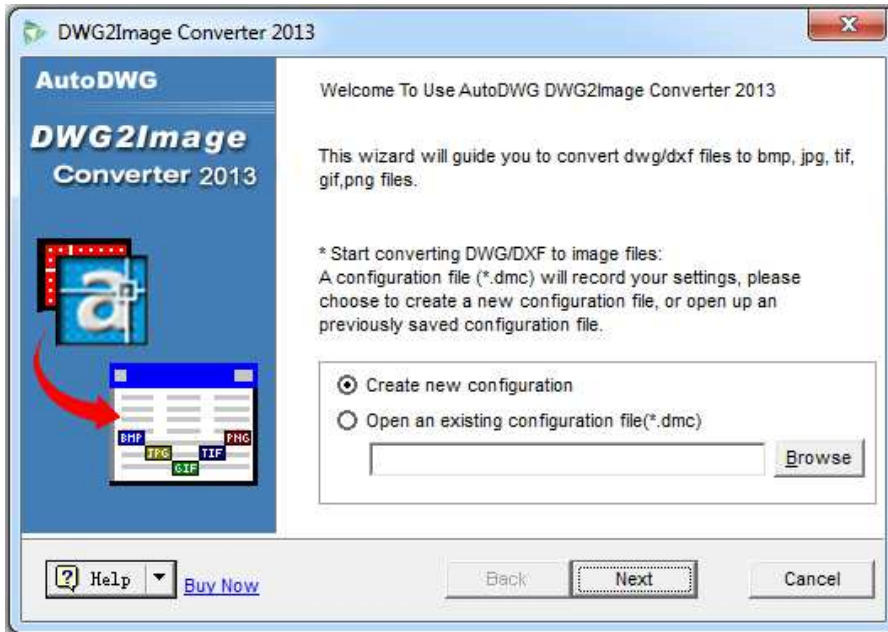


DWG to Image Converter User Guide

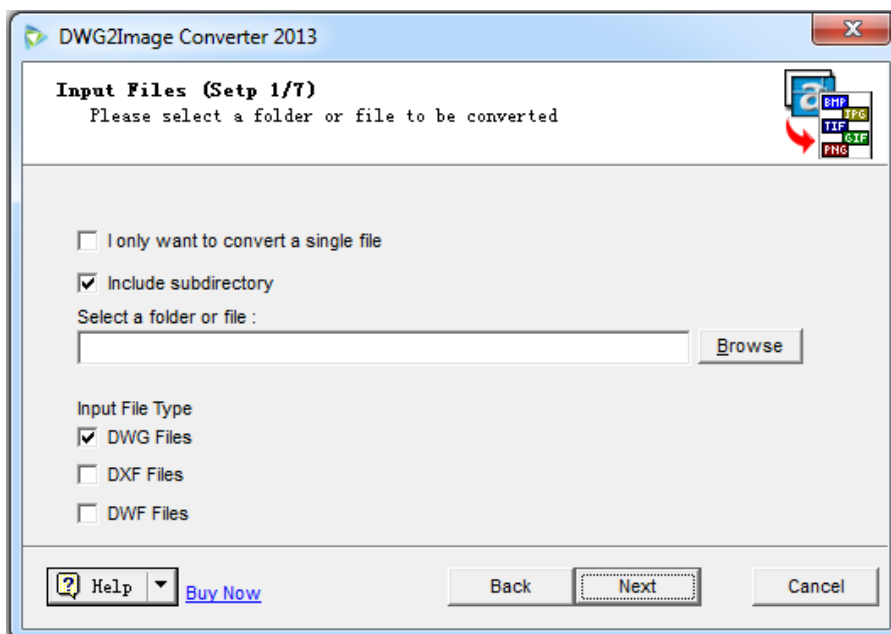
AutoDWG DWG to Image Converter batch converts DWG, DXF and DWF to JPG (JPEG), TIFF (TIF), GIF, PNG, BMP, WMF and EMF without AutoCAD.

To begin with, choose a configuration file to open or use default settings, then click Next.



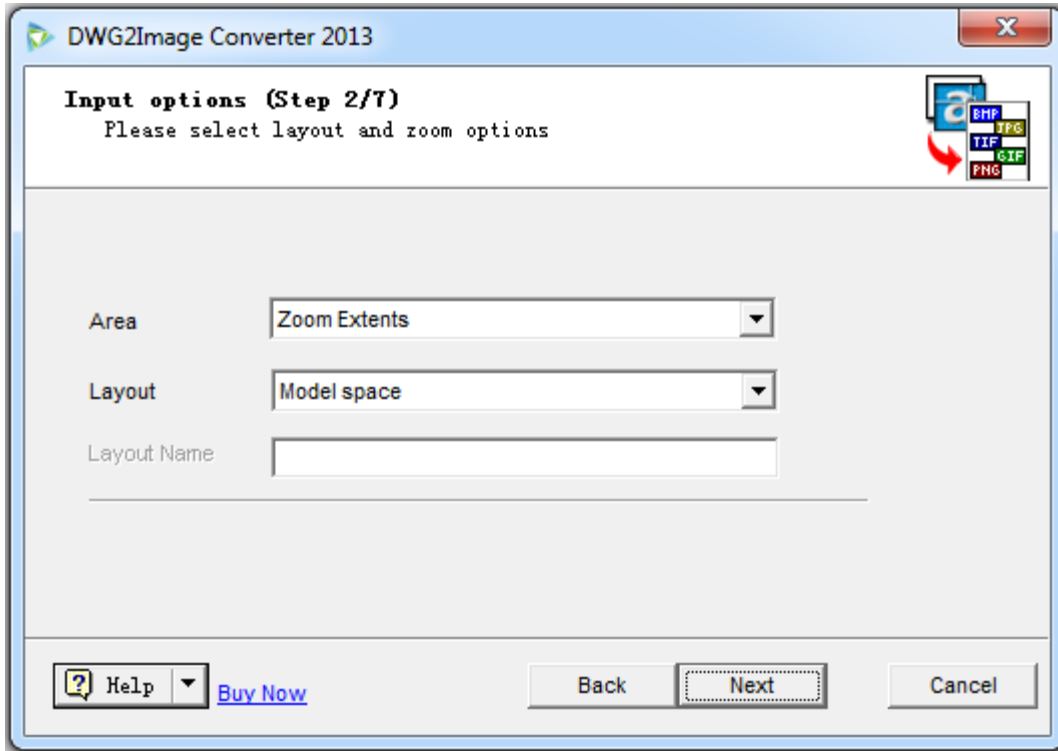
- What is configuration file?
The configuration file (*.dmc) is to save user settings for the AutoDWG converter.
- How does it save the configuration file?
Please notice the pop-up window when exiting the converter after conversion, click “Yes” and choose the location to save the configuration file.

Step 1: Browse and select the drawing(s) to convert

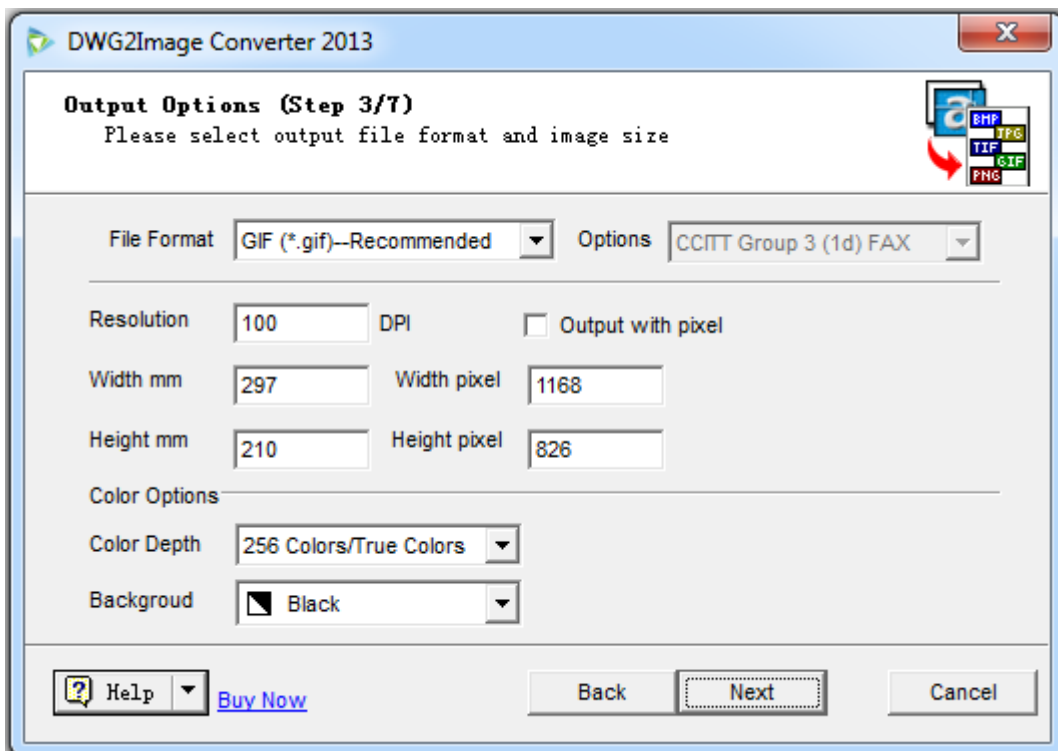


- Batch conversion and single file conversion
Batch mode is default, tip “include subdirectory” if you also need to convert files in subdirectory.
Click “I only want to convert a single file” when you want a single file converted.

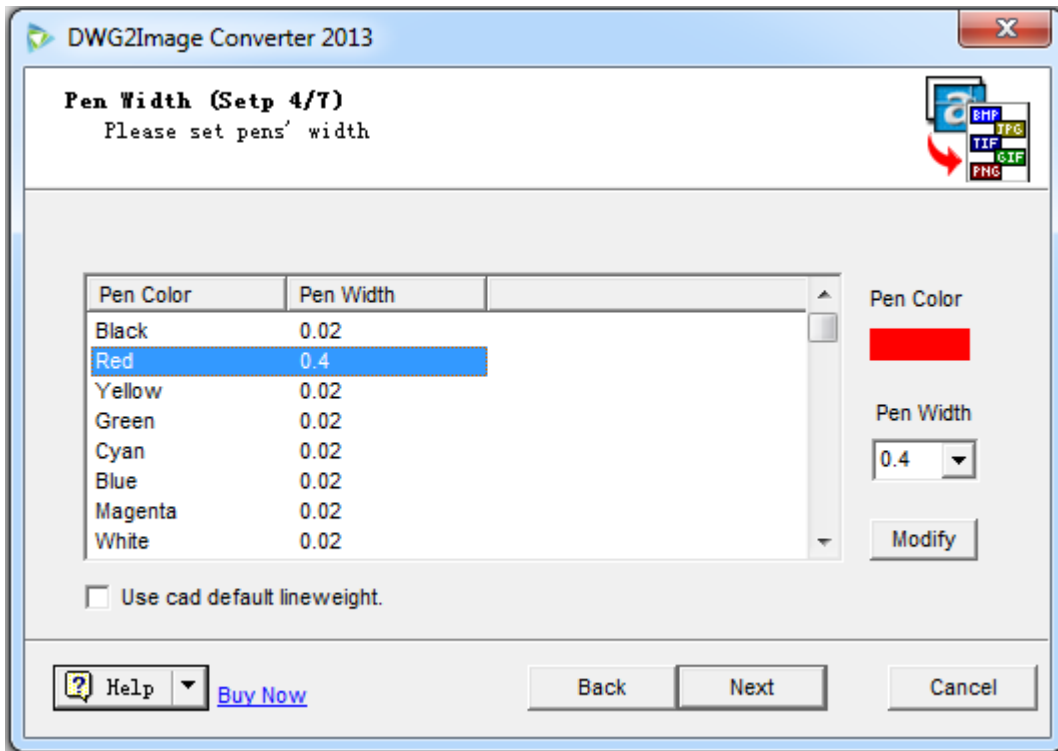
Step 2: Select layout and area, and click "Next"



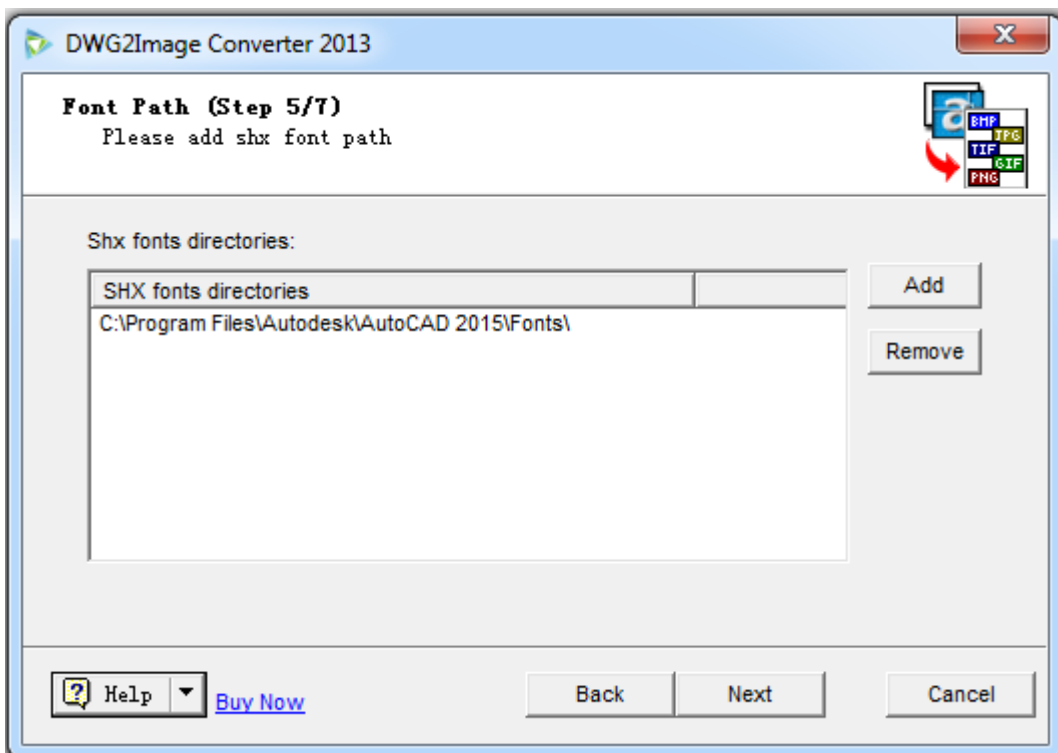
Step 3: Select output file format, and set resolution for area or click "output with pixel"



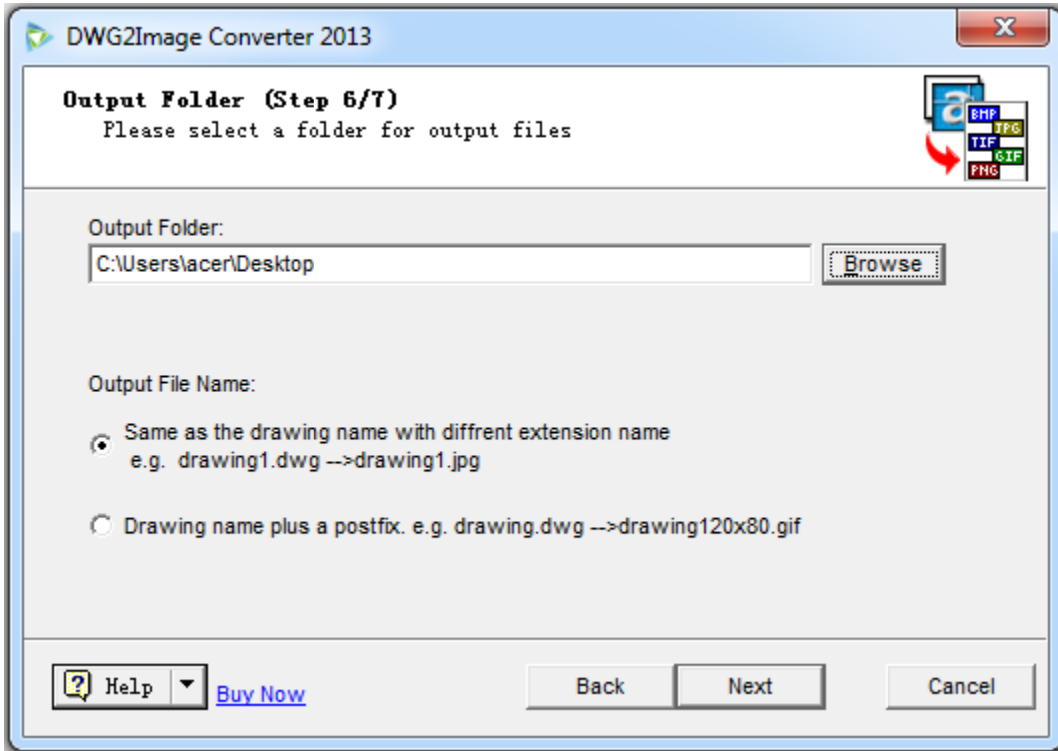
Step 4: Customize the pen width or use default settings.



Step 5: Set up SHX as you wish.



Step 6: Browse and select output file folder.



Step 7: Click the button "Convert Now", to finish the conversion.

